

ENVIRONMENT

Field studies were initiated in early 2016 and are ongoing. We expect to complete the majority of our environmental studies by November 2016.

These studies include:

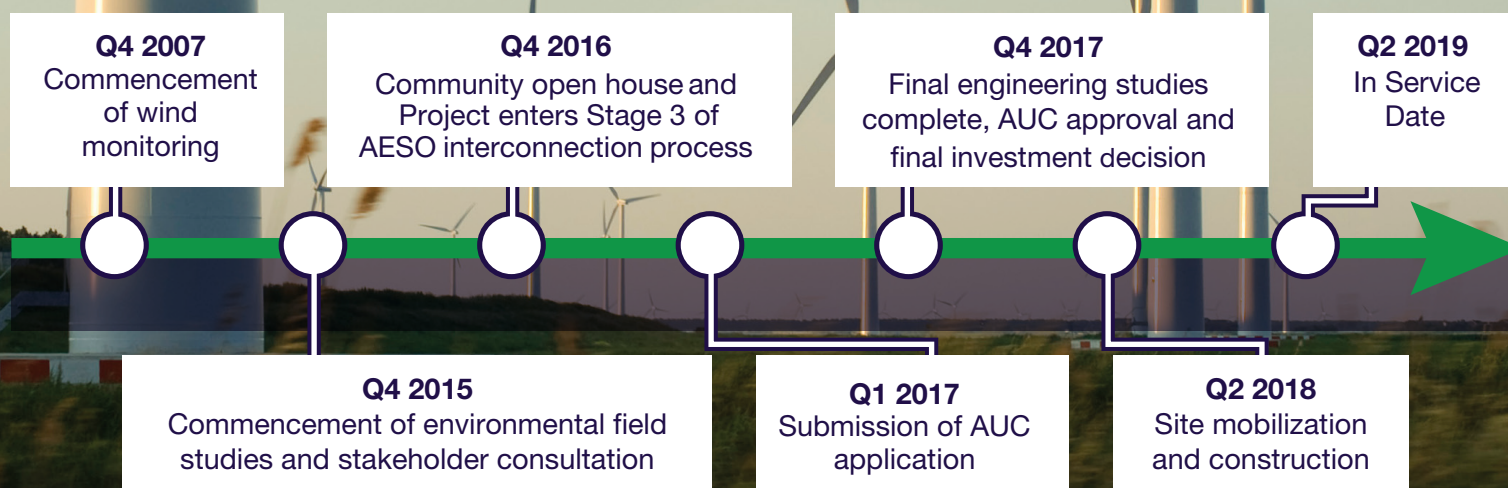
- Wildlife and Wildlife Habitat
- Vegetation
- Wetland
- Breeding Bird, Raptor & Burrowing Owl surveys
- Bat Studies
- Heritage Resources

Throughout our ongoing field studies, we are consulting with Alberta Environment and Parks (AEP) to understand any potential concerns they may have and we are incorporating their feedback. We will continue to work with AEP throughout the development, construction and operational stages of the Project.

For more information on the AUC application process, please review the brochure “Public Involvement in a Proposed Utility Development” included with this newsletter.

ANTICIPATED PROJECT SCHEDULE

Public consultation will continue through the life of the Project, from development, construction, operations and decommissioning.



CONTACT US

Wheatland Wind Project LP,
by its general partner Wheatland Wind Project Ltd.
Suite #124
100, 111 – 5 Ave SW
Calgary, AB T2P 3Y6

Dan Tocher
Stakeholder Relations Manager
Email: info@wheatlandwind.com
Toll Free: 1.888.270.5743
Web: www.wheatlandwind.com



Privacy Commitment: WWLP is committed to protecting your privacy. Collected personal information will be protected under the provincial Personal Information Protection Act (PIPA). As part of the regulatory process for new generation projects, WWLP may be required to provide your personal information to Alberta Utilities Commission (AUC). For more information about how WWLP protects your personal information, visit our website at www.wheatlandwind.com or contact us directly via phone toll-free at 1.888.270.5743.



Wheatland
wind project

WHEATLAND WIND PROJECT

OCTOBER 2016 • NEWSLETTER #1

INTRODUCTION

The 120 MW Wheatland Wind Project (Project) is being developed in your area by Wheatland Wind Project LP, by its general partner Wheatland Wind Project Ltd. (WWLP). WWLP is a partnership between two Canadian companies, Potentia Renewables Inc. and Greengate Power Corporation. We are committed to engaging landowners, public stakeholders and other members of the local community and we look forward to continuing a dialogue with you over the coming months.

This newsletter is an opportunity to share information about wind energy and the Project with you. We encourage you to reach out and ask questions, provide comments or suggest improvements.

Please also join us at an open house with details on this page. You will have an opportunity to meet and ask questions of the team as well as our consultants on the Project design, environmental assessment, visual and noise impact. We hope to see you there as your input is important to us.

IN THIS ISSUE

- INTRODUCTION
- ABOUT THE WHEATLAND WIND PROJECT
- WIND TURBINE TECHNOLOGY
- NEXT STEPS
- COMMUNITY FUND AND INVOLVEMENT
- ABOUT US
- ENVIRONMENT
- ANTICIPATED PROJECT SCHEDULE
- CONTACT US

COMMUNITY OPEN HOUSE

Please join us at our open house to learn more about the Project design, Alberta Utilities Commission (AUC) process, schedule and to provide input.

THE OPEN HOUSE WILL BE HELD ON:
Monday, October 24, 2016
5:00 – 8:00 PM
Hussar Community Hall
216 Centre Street
Hussar, Alberta

ABOUT THE WHEATLAND WIND PROJECT

The Project began development in 2007 and includes approximately 35,000 acres of land located thirty kilometres southeast of the Town of Drumheller. The Project is located in townships 26-18-W4M, 25-18-W4M, 26-17-W4M and 25-17-W4M on privately owned cultivated and grazing land and will generate clean energy while allowing landowners to continue with their daily activities. The Project area has an excellent wind resource which has been verified with seven years of collected onsite wind data.

The Project will be approximately 120 megawatts (MW) in size and is anticipated to be under construction in 2018. The Project involves the installation of up to 48 wind turbines, an electrical collection system, access roads and the construction of a new wind collector substation, called the Badlands Substation. The turbines in the Project will be connected through a combination of 34.5 kilovolt (kV) above ground and underground collector lines that connect at the proposed Badlands Substation. The Project will also require a temporary laydown area during construction and also an Operation and Maintenance Building during the operation of the Project.

The Project will also require construction of new access roads and upgrades to existing roads in the area. These roads are required to transport materials for turbine assembly during the construction stage, and to access turbines for regular maintenance during operation. WWLP will look to the local community where possible during construction for local trades and other business opportunities.

The Project proposes to connect to Alberta’s electric grid through an existing 138kV transmission line located within the Project area. This interconnection process will be covered under a separate consultation and application process conducted by Atco Electric. A proposed Project layout is included as a separate page to this newsletter.

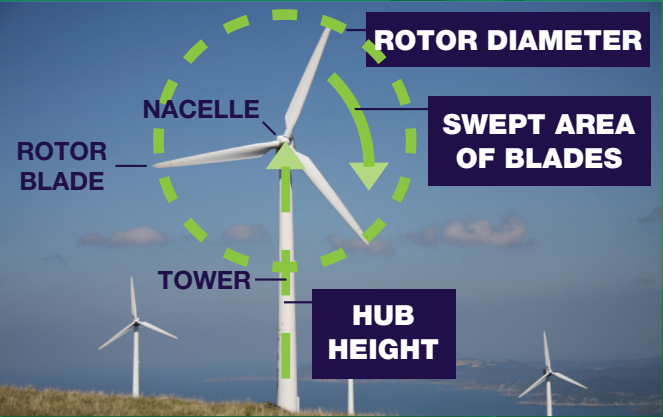
WIND TURBINE TECHNOLOGY

The Project will use turbines with a hub height of up to 110 metres (m), a rotor diameter of up to 140 m and a power rating of up to 3.6 MW per turbine. The turbine type and specifications are subject to change. This graphic shows the components of a typical turbine.

Q: What is Wind Energy?

A: Wind energy is generated through the use of wind turbines. The turbines capture the kinetic energy generated by the wind and convert the kinetic energy into electricity. Continuous innovation and reduction in costs has made wind energy one of the most economic sources of large-scale electricity generation. Each modern wind turbine can supply electricity needs for approximately 1,500 homes¹.

¹Solas Energy Consulting Inc. Oct. 2016



NEXT STEPS

WWLP will have its open house on Monday, October 24, 2016 where it will show stakeholders detailed plans for the Project. Following the open house, WWLP will continue to engage in public consultation with stakeholders in the surrounding area. WWLP is committed to engaging landowners, public stakeholders and potentially affected Aboriginal communities about the Project. WWLP intends to file turbine locations and related technical information under a wind power plant application with the Alberta Utilities Commission (AUC) early in 2017. WWLP is committed to sharing information about the Project and working with the public to ensure that stakeholder input and concerns are

heard and addressed. Stakeholders are encouraged to participate throughout this process. We hope you will contact us if you have any questions or concerns about the Project. A summary of stakeholder comments will be incorporated into the power plant application that we submit to the AUC.

To learn more about the application and review process, please contact the AUC at:

Tel: 780-427-4903 (Toll-free by dialing 310-0000 before the number)

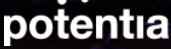
Email: consumer-relations@auc.ab.ca

COMMUNITY FUND AND INVOLVEMENT

WWLP is pleased to announce it is currently in the process of setting up a community development fund for the Project. WWLP will provide the community with a funding commitment throughout the Project life, and will work with existing community representatives to support local initiatives and projects. More details on the fund will be shared with the community as the Project progresses. This community development fund will be in addition to the significant municipal tax revenues generated by the Project.

WWLP is also interested in supporting local events and activities in the community. Please let WWLP know if there are ways that we can support local initiatives and the community.

ABOUT US



Wheatland Wind Project LP, by its general partner Wheatland Wind Project Ltd. (WWLP) is a partnership between Potentia Renewables Inc. and Greengate Power Corporation.

Potentia Renewables Inc. is an independent power producer focused on developing, managing and operating renewable energy systems. Potentia Renewables Inc. is a wholly owned subsidiary of Power Corporation of Canada, a diversified international management and holding company.

Greengate Power Corporation is a leading renewable energy company based in Calgary, Alberta. To date, Greengate has successfully developed 450 MW of operating wind projects in Alberta. These projects represent over 30% of the wind energy generated in Alberta and provide a clean source of energy to approximately 200,000 homes.

T.27

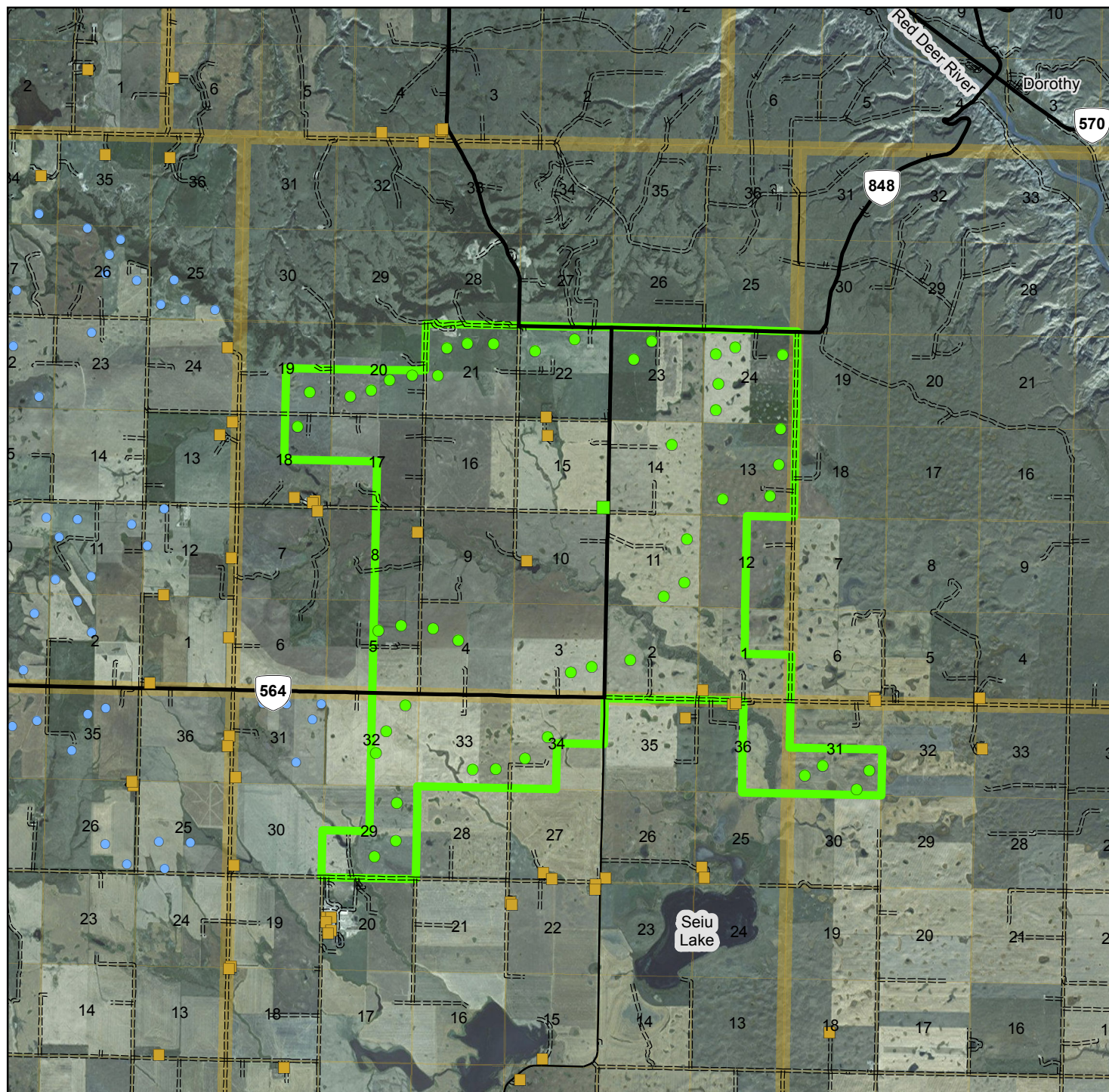
T.26

T.25

R.19

R.18

R.17 W4M



Wheatland Wind Project Proposed Project Map (Subject to Change)

- ▬ Project Boundary
- Approximate Turbine Location
- Approximate Project Substation
- Residence
- Existing Wintering Hills Turbine
- Minor Highway
- Paved Road
- Other Road
- ▬ Township Lines
- ▬ Section Lines

Version: 6
Date: 2016-10-05
Layout: 20160929

Prepared By: WSP

Datum: NAD 83
Projection: UTM Zone 12N
Scale: 1:100,000

0 0.5 1 2 3
Kilometers



Data Credits: Alberta Township System, roads and water: AltaLIS (c) Government of Alberta. Imagery: Source: Esri, DigitalGlobe, GeoEye, Earthstar Geographics, CNES/Airbus DS, USDA, USGS, AEX, Getmapping, Aerogrid, IGN, IGP, swisstopo, and the GIS User Community