



WHEATLAND WIND PROJECT



VIRTUAL OPEN HOUSE

**October 13, 2021
6:30PM – 8:00PM**

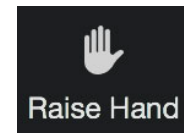
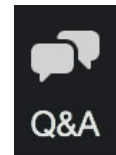




Have a Question?



- **During the presentation** – Type your question in the **Question and Answer** box
- **During the Q&A Session** – Press the **Raise Hand** button to ask your question using your microphone or type your question in the **Question and Answer** box





- Team Introduction
- Overview of the Wheatland Wind Project
- Summary of Approvals and Permits
- Upcoming Construction Activities and Schedule
- Getting Involved with the Project
- Q&A
- Contact

TEAM INTRODUCTION

Potentia Renewables Inc. (PRI)

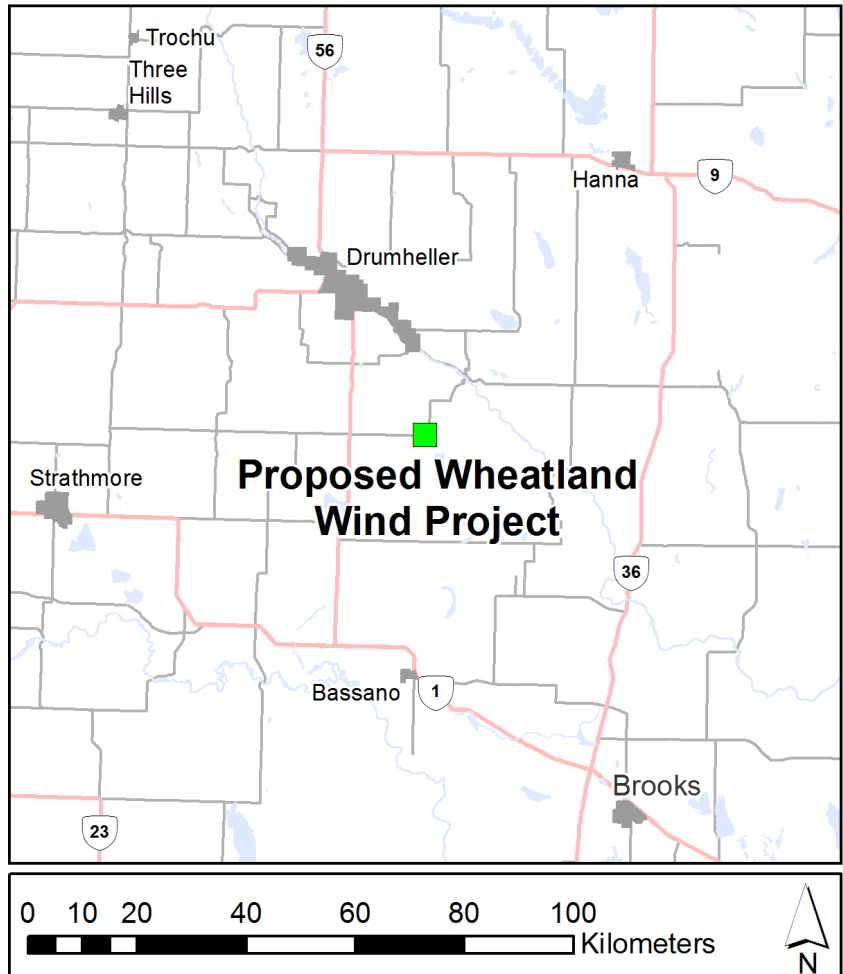
Project Manager	Keaton Lever
Construction Manager	Juergen Kraus
Environment & Community Contact	Cathy Zhao

Contractors

SkyFlo Consulting	Main Engineering, Procurement & Construction (EPC) Contractor	Dave Willms Mike Hopkins
PESCA	Lead Environmental Monitor	Luc Prefontaine
AECOM	Community Liaison Committee / Community Consultation	Alicia Evans

OVERVIEW OF THE WHEATLAND WIND PROJECTS (WWP)

- Project nameplate capacity: **122.4 MW**
- Located approximately 30 km southeast of the Town of Drumheller
- Received approval from the Alberta Utilities Commission (AUC) in September 2018
- Construction of the WWP will involve the installation of:
 - 24 wind turbines
 - An underground collection system
 - Access roads and road upgrades
 - A project substation (Badlands Substation)
 - An Operations and Maintenance (O&M) building
 - Temporary construction laydown areas
- An update was sent to the AUC in May 2021 outlining recent changes made to the project



OVERVIEW OF THE WHEATLAND WIND PROJECT (WWP)

Turbine Specifications

Turbine Model	Siemens 5.0
Turbine Capacity	5 MW
Tower Hub Height	95.5 m
Rotor Diameter	145 m



Local Benefits

The WWP will benefit the local community in a variety of ways, including:

- Creation of up to 200 construction and 5-15 permanent local jobs in operations
- Contract opportunities during construction in excavation and civil works, aggregate supply, etc.
- Contract opportunities for local businesses in snow clearing, road maintenance, fencing, reclamation etc.
- Increased local spending on goods and services during project development, construction and operational phases
- Community Development Fund (CDF) commitments starting from operation of the WWP

SUMMARY OF APPROVALS AND PERMITS - WWP

Alberta Utilities Commissions (AUC) Approvals

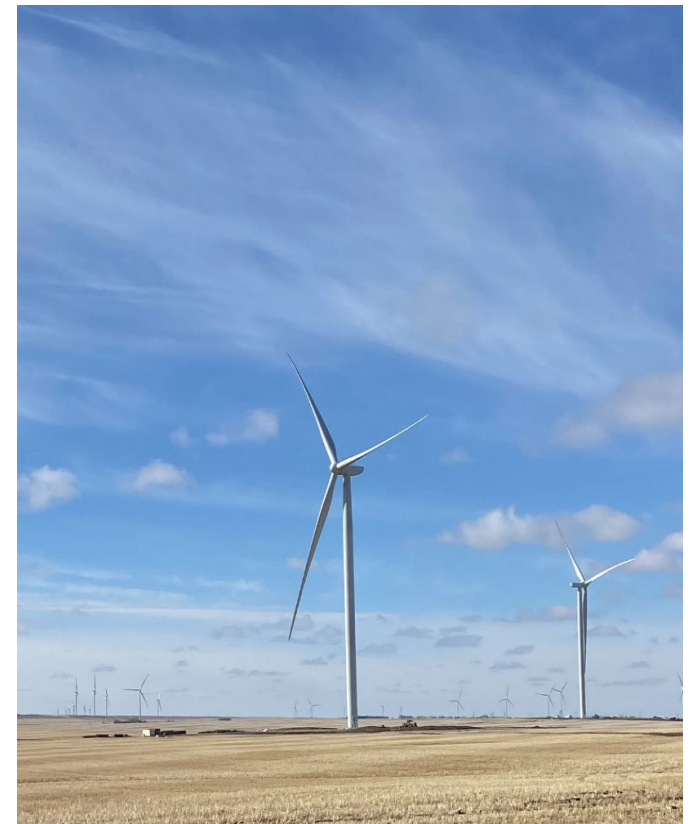
- Badland Substation AUC Permit & Licence
- WWP AUC Power Plant Approval

Non-AUC Approvals

- Alberta Culture – Historical Resources Act Clearance
- Alberta Transportation – Roadside Development Permits and Utility Permits
- Transport Canada – Aeronautical Assessment and Clearance
- Environment Canada – Weather Radar interference assessment
- NAV Canada and Department of National Defence – Letter of No Objection

Municipal

- County of Wheatland Development Permits
- Road use agreement



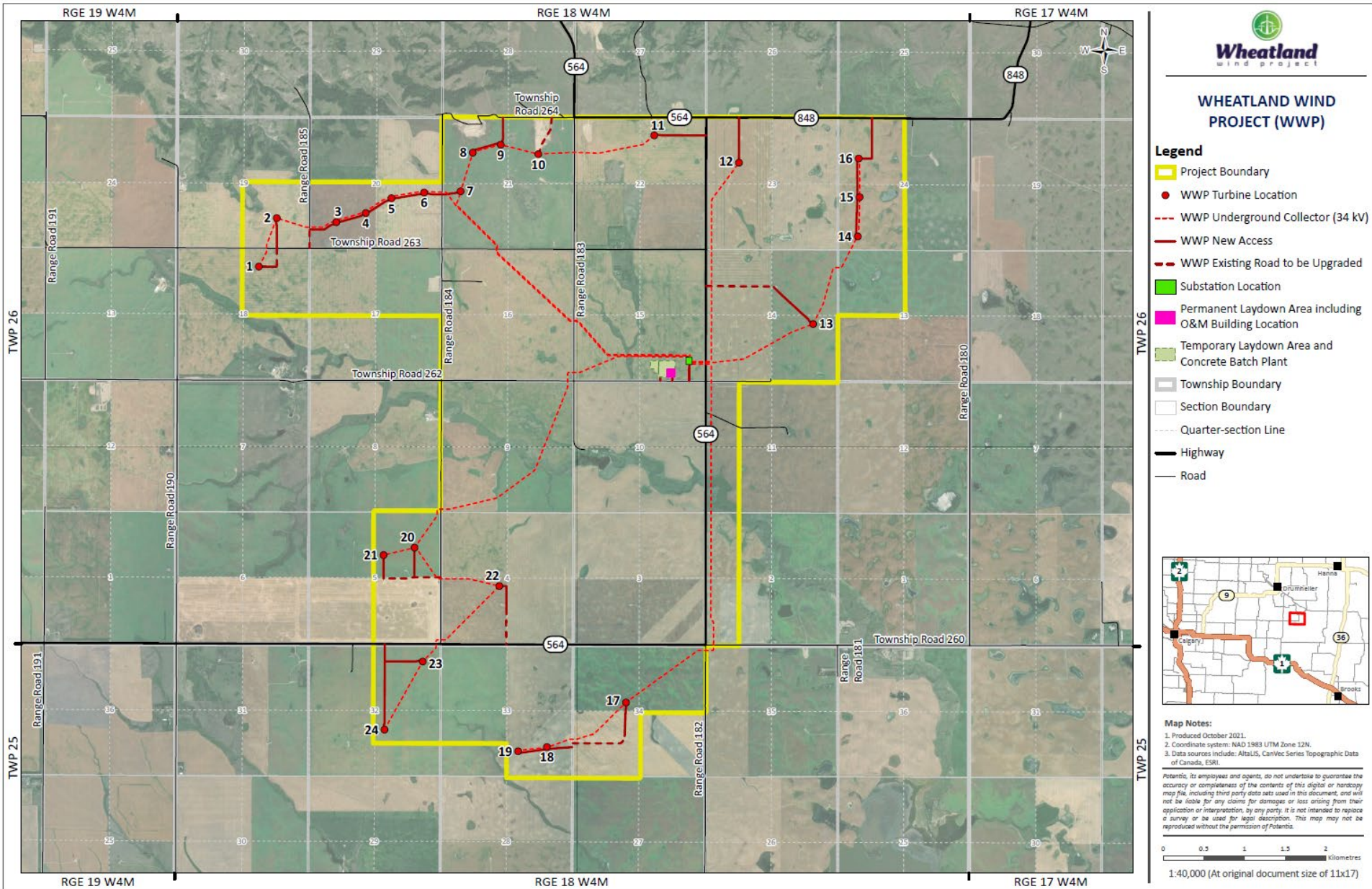
SUMMARY OF APPROVALS AND PERMITS – WWP



Environmental

- The WWP has completed all the pre-construction wildlife surveys required by Alberta Environment and Parks (AEP)
 - Raptor nest surveys are repeated every two years until COD and results are submitted to AEP
- The WWP has been planned to reduce potential environmental impacts as much as possible
- A site-specific Environmental Protection Plan (EPP) will be followed by the EPC contractors
- Environmental Monitors during construction to advise and monitor the EPC, particularly within or near sensitive environmental features.
- Prior to crossing wetlands and drainages, Water Act notifications will be submitted to the AEP
- Disturbed lands will be reclaimed after construction/operation per the Conservation and Reclamation Directive
- Post-construction bird and bat mortality monitoring

UPCOMING CONSTRUCTION ACTIVITIES AND SCHEDULE



UPCOMING CONSTRUCTION ACTIVITIES AND SCHEDULE

- Equipment to be onsite this fall:
 - Graders, scrapers, bulldozers, water truck for dust control and soil compaction, and other soil compaction equipment
- There will be a short period of heavy traffic near the end of October:
 - Approximately 100 trucks of gravel will be delivered to the Substation within the Project boundary



GETTING INVOLVED WITH THE PROJECT

Community Liaison Committee (CLC)

Become a CLC Member:

- The CLC is expected to consist of between 3 and 8 community members plus PRI representatives
- CLC members will be responsible for attending up to 5 meetings between 2021 and 2023
- We're inviting individuals from the following groups to apply to the CLC:
 - Local residents, occupants and landowners within 2km of the Wheatland project boundary
 - Local businesses or industry representatives
 - Local social, community or environmental groups
 - Other interested parties
- If there aren't enough applicants for the CLC, PRI will host regular open houses, distribute newsletters, and/or provide information on the website to keep the community informed
- Please apply by October 31, 2021, via email at info@wheatlandwind.com



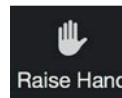
Wheatland
wind project



Type your question in the
Question and Answer box



Press the Raise Hand
button to ask your question
using your microphone



Email your questions to:

info@wheatlandwind.com



For general information or questions, please contact us at: info@wheatlandwind.com

For more information on the CLC or if you would like to become a CLC member, please contact Alicia Evans at alicia.evans@aecom.com

For an emergency construction issue, please contact our construction manager Juergen Kraus ([204-941-9938](tel:204-941-9938))